



BAIT LOGITECH PVT. LTD.



ABOUT BAIT LOGITECH PVT. LTD.

BAIT LOGITECH PVT. LTD. based at Bhubaneswar, Odisha, India, are pioneers engaged in multifarious activities of Manufacturing of Fabricated Steel Structures, Designing & Engineering of Civil and Structural Work, Civil Construction and Project Management, Environment Management, Corporate Social Responsibility Activities, Corporate Affairs, Raw Material Management, Trading in Coal, Iron Ore & other Minerals, Paints, Welding Machines & Consumables; Industrial Valves & Bearings etc in the sectors of both manufacturing and services.

Structural Fabrication & Equipment Erection and Commissioning: BLPL has stepped up services all over India in providing services in Structural Fabrication & Erection of Structural Sheds, Heavy columns/beams, girders, pipelines, storage yards, water reservoirs, and development & Maintenance of mechanical and civil infrastructure facilities etc; and for the purpose has entered in to a business association with Mid East Integrated Steel Ltd in Kalinganagar Industrial Area, Jajpur district, Odisha to develop a state of art Structural Fabrication yard with all modern equipments and infrastructure. **BLPL has its Structural Steel Manufacturing unit at Kalinganagar, Jajpur for which a patch of 10 Acres of Industrial Land is allotted by the Industrial Infrastructure Development Corporation, Govt of Odisha.** Our clients include Essar, Lanco, Nagarjuna Construction & Gayatri Construction etc. and the end-users are Indian Oil Corporation's upcoming Refinery Project at Paradip and Tata Steel's upcoming Steel Plant Project at Kalinganagar, Odisha.

Trading: BLPL are business associates of Clean Coats for Paints & Coatings; of GEE Ltd. and Shieldarc Pvt Ltd for Welding Equipments & Consumables; of Rexnord India Pvt. Ltd. for Power Transmission Products and solutions, for Bearings and Couplings; Kalinga Roofing Solutions Pvt. Ltd. for Roofing Sheets & Accessories. We constantly endeavour for and ensure perfect customer satisfaction through seamless delivery of products as per their requirements.

Project Consulting: BLPL's wide ranging contacts, supported by a dedicated expert team of highly qualified, hugely efficient, and vastly experienced professionals comprising both technocrats and management leaders, gives us a shot in the arm to provide quality consulting services catering to multiple business segments in project implementation, corporate affairs and corporate social responsibility activities, environment management and advisory etc. We provide Consultancy Services to:

Bharat Coal & Chemicals Ltd. for Coal to Amonia Project at Paradip; Thriveni Earthmovers Ltd. in project, mining, environment & corporate affairs; B K Steels for Brown Field Steel Plant at Barbil; Trimax Sands Ltd. for Titanium Project at Gopalpur. These include large Industrial Projects comprising a total value outlay of more than 10K Cr.

Manpower Strength: BLPL boasts of a team of dedicated and inspired staff strength of more than 90 nos of high skilled technical staff (from the level of Dir up to Foreman), assisted by more than a hundred

junior level staffs of Technicians, Administrative, Store, Fin & Accounts, Purchase & Inspection, Trade & Commerce, Public Relations & Legal etc. Besides the above regular staffs, BLPL also hires the services of more than a thousand field level workers through expert and experienced contractors for the finest execution of work. BLPL Executives are governed by high level professional and ethical approach while implementing :- Realistic Project Planning for both machine & manpower; Systematic Project Review Technicalities; Adoption of Project Management Software Tools; Regular Client Feedback System; and Setting Intermittent Mile-stone Targets.

Safety Measures: BLPL implements: Compulsory PPE for all workmen at site; Mandatory area cordoning and meeting fire safety requirements; Safe scaffolds and self standing ladders for work at heights; Strict supervision through trend safety supervisors, Daily safety meetings before start of job at site; and Regular intermittent awareness programmes for staff and workers through experts.

Reporting Procedure: BLPL implements: Daily Progress Report; Weekly Progress Report; Monthly Progress Report; As built drawings at the end of completion along with project manual.

Quality Control: Our manufactured products are always processed under strict quality control parameters; and our services segment always provides value based services adhering to strict time lines.

Vision: To provide pragmatic business leadership in enabling sustainable quality socio-economic growth opportunity to all our stake holders.

Motto: Ethical Corporate Governance, Sustainable Quality Services, Unflinching Zeal for Growth, Client Satisfaction and accomplishment.

Global: BLPL has its International Business offices in Toronto, Rhodes Island and Sydney to cater to our clients' overseas business needs.

Clientele of Bait Logitech

✂ Fabrication

- ✂ Essar Projects (I) Ltd. At IOCL Refinery Paradip.
- ✂ Nagarjuna Construction Company Ltd. at IOCL.
- ✂ Lanco Infratech Ltd. at IOCL, Paradip
- ✂ Gayatri Projects Ltd at TATA Steel Project.
- ✂ SEW (NMDC)
- ✂ Supreme Infrastructure India Limited (MCL/NBCC)
- ✂ Jindal Steel & Power Ltd, Angul
- ✂ Shyam Metalics & Energy Limited.
- ✂ TATA Steel Limited, Kalinganagar
- ✂ Brahmani River Pellets Limited

✂ Erection

- ✂ Gayatri Projects Ltd. at TATA Steel Project.
- ✂ Supreme Infrastructure India Limited (MCL/NBCC)
- ✂ Jindal Steel & Power Ltd, Angul
- ✂ Thyssenkrupp Industries India Pvt. Ltd. at Adani Dhamra Port.
- ✂ Shyam Metalics & Energy Limited.
- ✂ Brahmani River Pellets Limited

Civil

- ✂ Supreme Infrastructure India Limited
- ✂ Construction of low cost houses under RAY Project. (NBCC)

✂ Project Management

- ✂ Bharath Coal & Chemical Ltd. for Paradip
- ✂ KJS Steel & Power Ltd. Barbil
- ✂ TRIMEX Sands Ltd. for Gopalpur
- ✂ Linde India limited (Formerly known as BOC)

✂ Environment Management

- ✂ KJS Ahluwalia Steels Ltd
- ✂ KJS Ahluwalia Mines
- ✂ Thriveni Earth Movers Ltd.
- ✂ KJS Ispat Ltd.
- ✂ Linde India Limited

✂ Trading

- ✂ Ador Fontech
- ✂ GEE Ltd.
- ✂ Chemtech Industrial House Pvt Ltd.
- ✂ Kalinga Roofing Solutions Pvt Ltd
- ✂ NSK
- ✂ Timken

✂ CSR & CORPORATE AFFAIRS

- ✂ Thriveni Earth Movers Ltd.
- ✂ KJS Ahluwalia Mines
- ✂ Lanco Infrastructure Ltd.
- ✂ BCCL, Chennai
- ✂ Trimex Sands Ltd. Chennai
- ✂ Vedanta Aluminium Ltd.
- ✂ ESSAR Steel
- ✂ SCAN Steels



Bait Logitech

FACILITY AVAILABLE

MACHINES AVAILABLE AT MACHINE SHOP

SL.NO	MACHINE NAME	SPECIFICATION	QUANTITY
1	LATHE MACHINE	8FT	2
2	LATHE MACHINE	12FT	1
3	PLANNO MILLER	24	1
4	SHAPER MACHINE	32	1
5	HEX CUTTING MACHINE	0-450MM	1
6	PIPE CUTTING MACHINE	0-200MM	1
7	DRILLING MACHINE	0-100MM	1
8	PLATE BENDING MACHINE	25MM	1
9	PIPE BENDING MACHINE	UP TO 200DIA	1
10	COMPRESSOR FOR BLASTING	275CFM	1
11	COMPRESSOR FOR PAINTING	100CFM	1
12	HORIZONTAL BORING MACHINE		1

HANDLING FACILITIES AVAILABLE

SL.NO	MACHINE NAME	SPECIFICATION	QUANTITY
1	CHAIN BLOCKS	HERCULAS (5MT)	5
2	CHAIN BLOCKS	HERCULAS (10MT)	5
3	HYDRA	ACE (14MT)	2
4	EOT CRANE	20/5 MT	2
5	EOT CRANE	10MT	2
6	Winch Machine	5 MT	2

QUALITY CONTROL EQP AVAILABLE

SL.NO	NAME OF EQUIPMENT	QUANTITY
1	Vernier Caliper	5
2	Micrometer	5
3	Ultra Sound Facility , Radiography Testing Facility ,	Outsource (Rapid Methodolgical Services)
4	Stress Relieving	Behera Industries
5	Blasting Tests	Profile Meter
6	Physical And Chemical Tests	GovtLaboratory
7	Painting Testing Facility	DFT Gauge

FACILITY AVAILABLE AT FABRICATION SHOP

1	TIG WELDING OUTFIT	Panasonic (400 Amps.)	25 Nos.
2	MIG WELDING MACHINE	Ador/Essab/Panasonic (400 Amps.)	20 Nos.
3	SAW WELDING MACHINE	WARRP (1000 Amps.)	1 No
4	TACKING MACHINE	WARRP (200 Amps.)	05 Nos.
5	PUG CUTTING MACHINE	Konark	15 Nos.
6	ADVANCE AIR PLASMA CUTTING MACHINE	L&T	1 No.
7	DRILL MACHINE	Bosch (50Ø-100 Ø)	04 Nos
8	DRILL MACHINE	Bosch & KPT (30Ø)	07 Nos.
9	GRINDING MACHINE (AG-5)	Bosch & KPT	15 Nos.
10	GRINDING MACHINE (AG-7)	Bosch & KPT	10 Nos.
11	HYDRAULIC JACK	Herculas (50 MT)	1 No.

BACK UP FACILITY AVAILABLE

1	DIESEL GENERATOR	Cummins (250 KVA)	1 No.
2	ELECTRICAL TRANSFORMER	500 KVA	1 No.
3	Diesel Generator	Kirloskar (7.5 KvA)	1 No.

CONSTRUCTION EQUIPMENT & VEHICLE

1	Volvo Loader	5Ton / 4.5cum	2 Nos
2	TATA Hyva	14 cum	5 Nos
3	TATA Prima	18 cum	20 Nos

Manpower Strength

1. BE (Mech) : 13 nos
2. DME : 14 nos
3. Skilled Man Power : 150 nos
4. Unskilled Manpower : 200 nos

Fig: Omni Screen Undersize Chute



Fig: Ducts



Fig: Chimney Part 1 & Part 2



Fig: Chimney Part 3





Fig: Picture inside shed



(Shed Dimension: 70LG x20Width x 12Lift)

Fig: Ring Granulator



Fig: Bridge



Fig: Main Casing assembly



Fig: Column for CCP

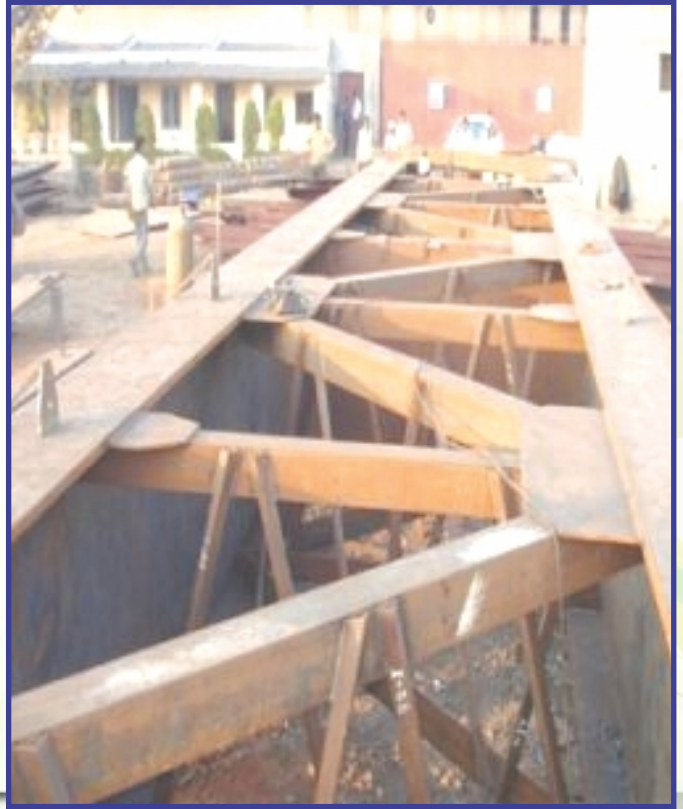


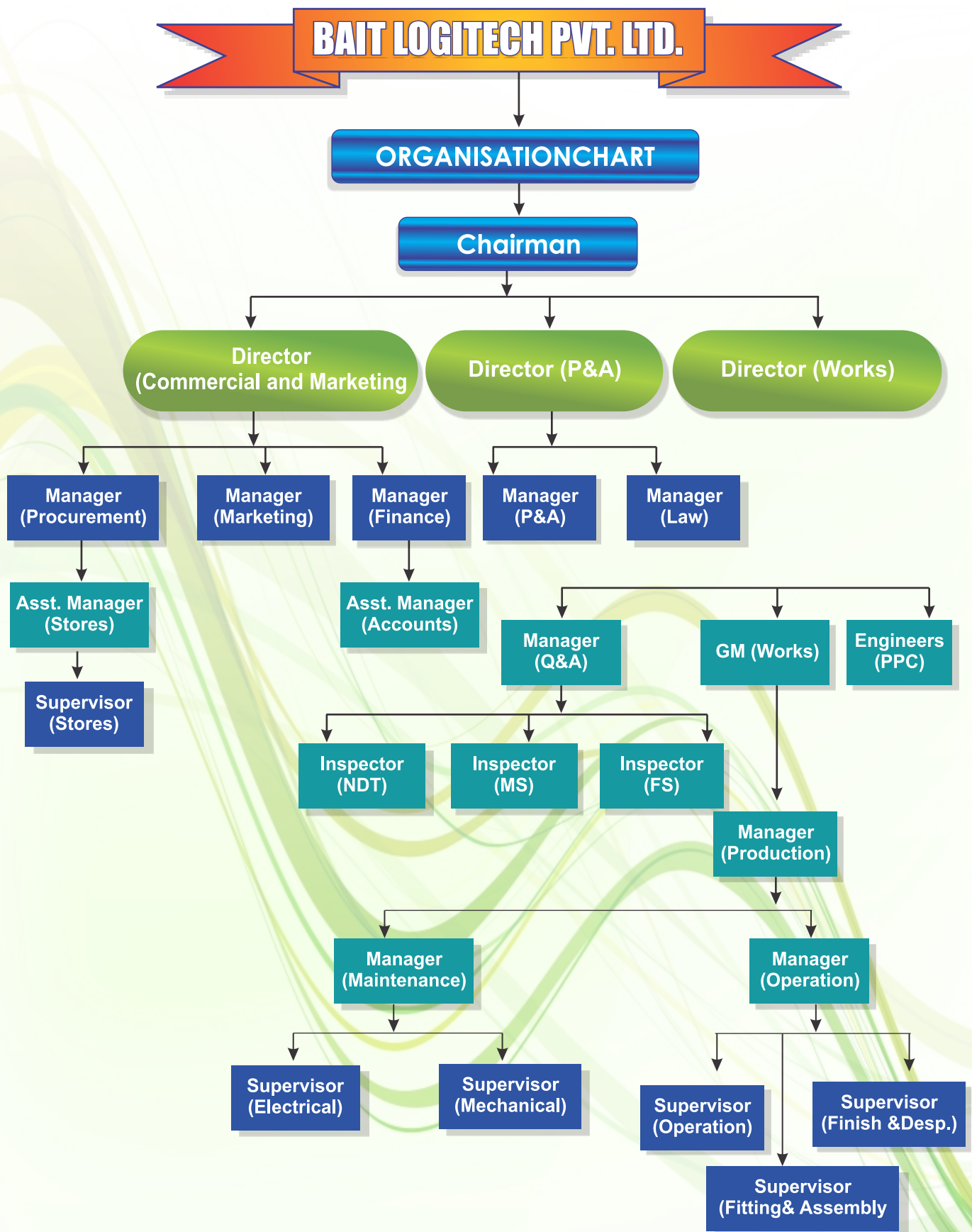


Fig: Longitudinal Beam



Fig: Paper mill platform







BAIT LOGITECH PVT. LTD.

IDCO Tower (4th Floor), Janpath, Bhubaneswar - 751022

Mob.: 9437094999, 9238491999

E-mail : brahmanandamishra@baitlogitech.in

brahmamishra@yahoo.ca

Web : www.baitlogitech.in